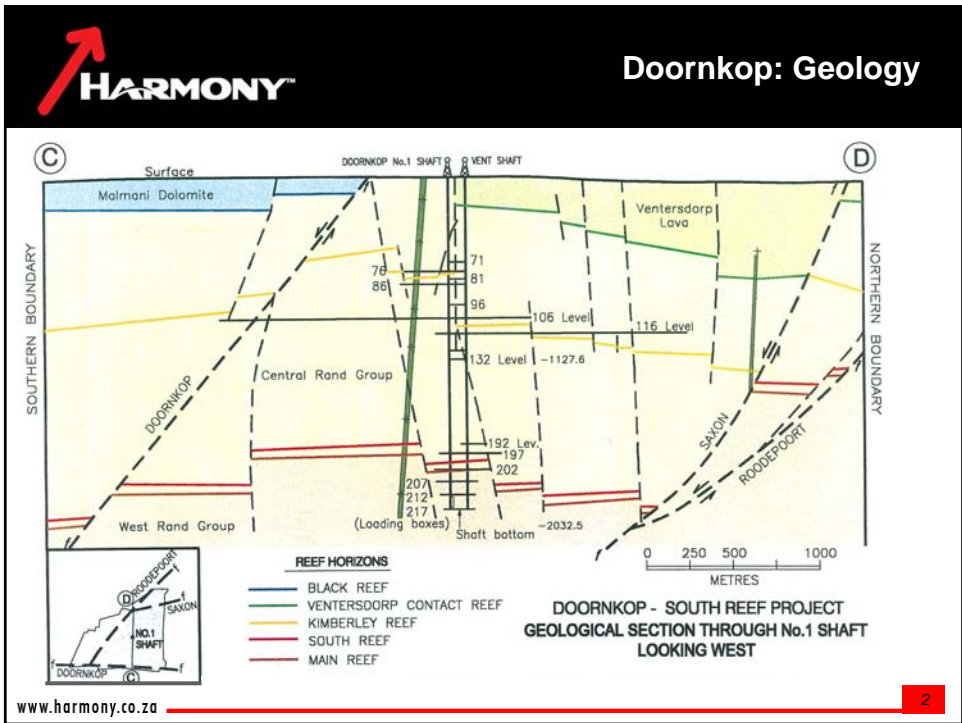
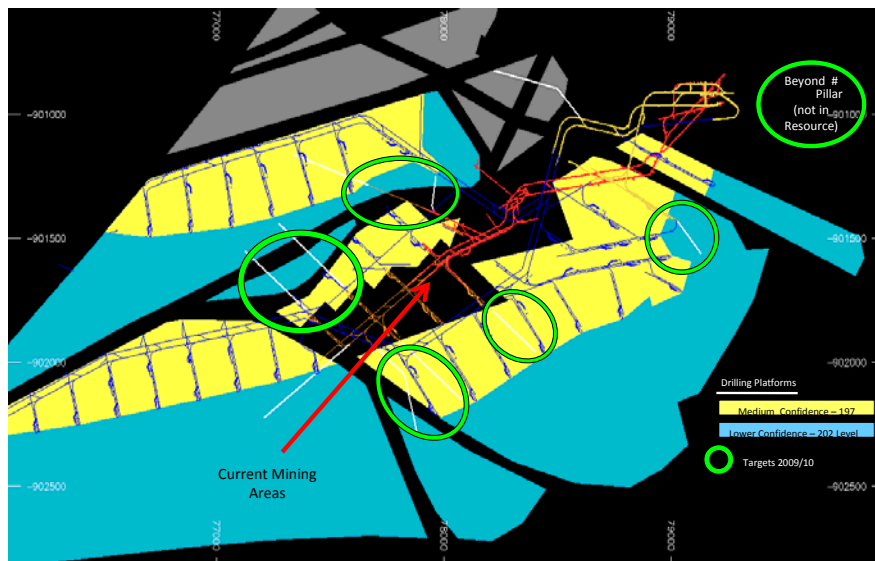
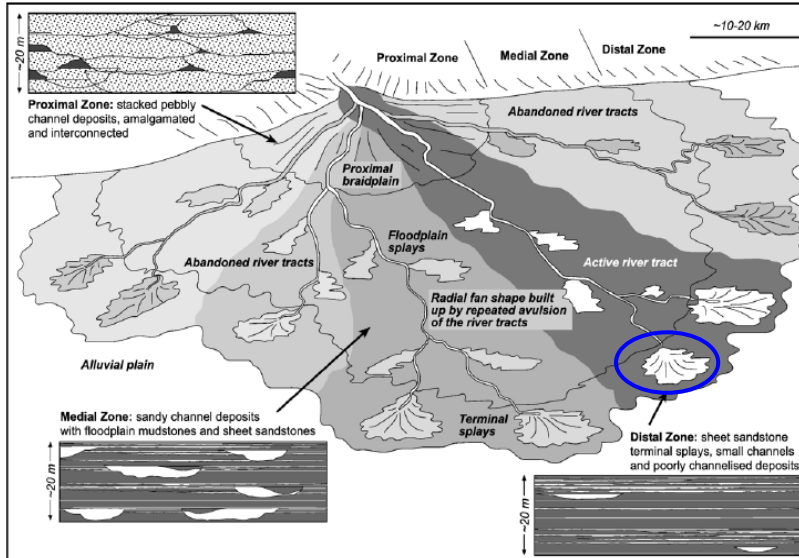
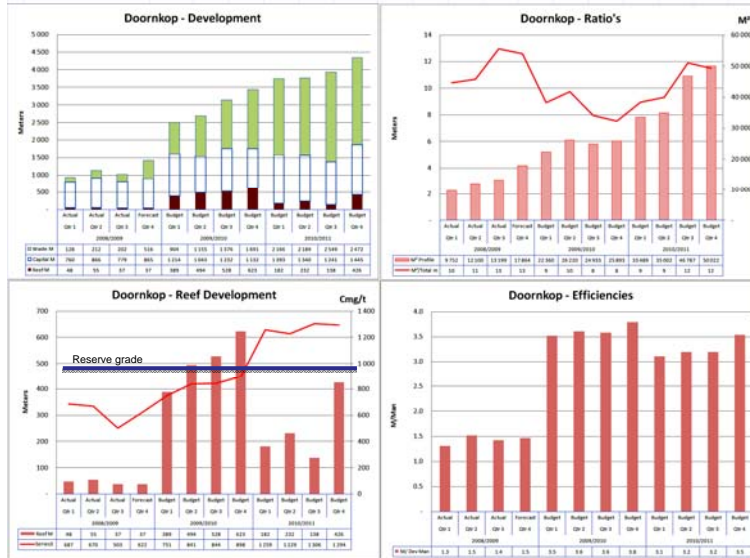


DOORKOP

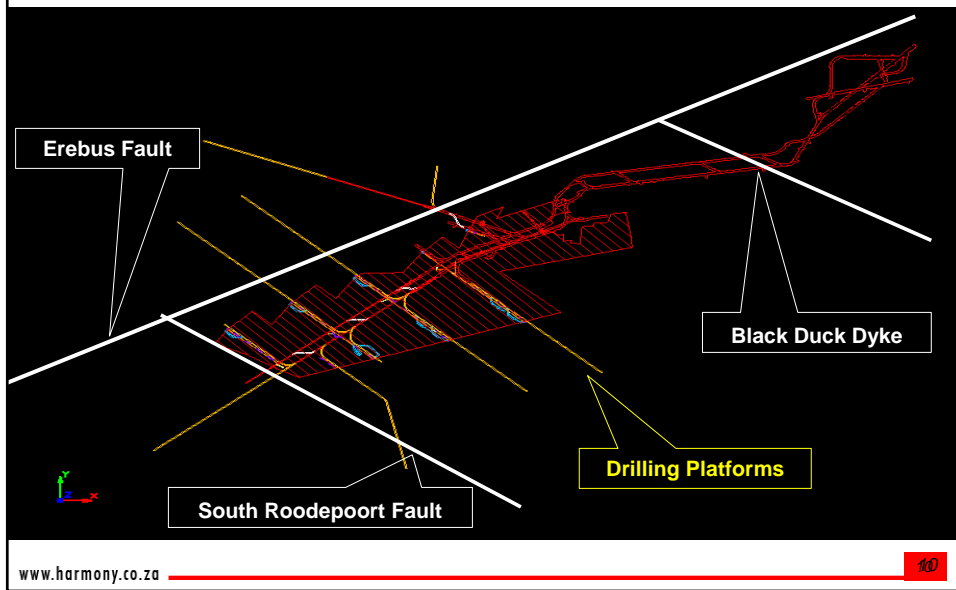
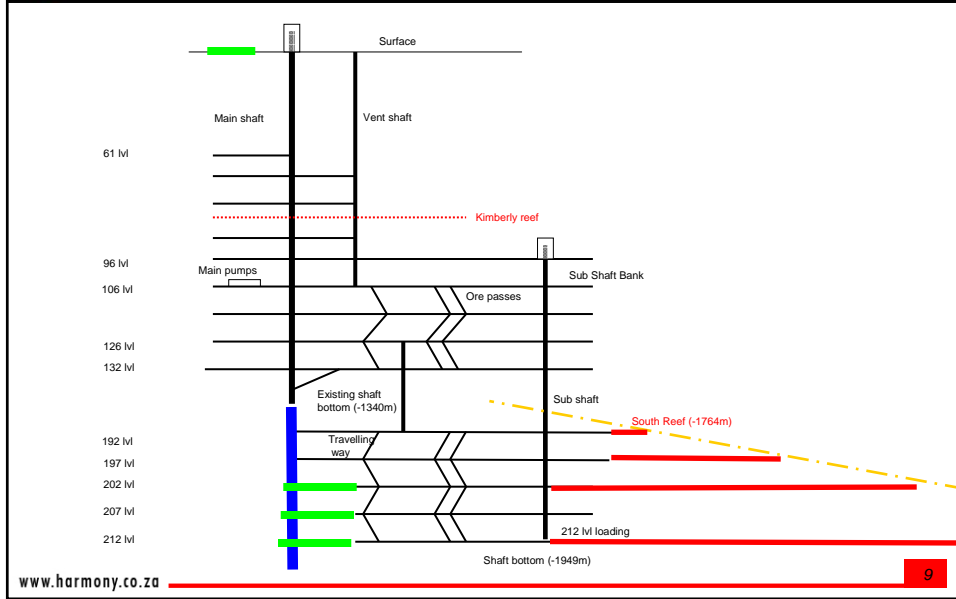


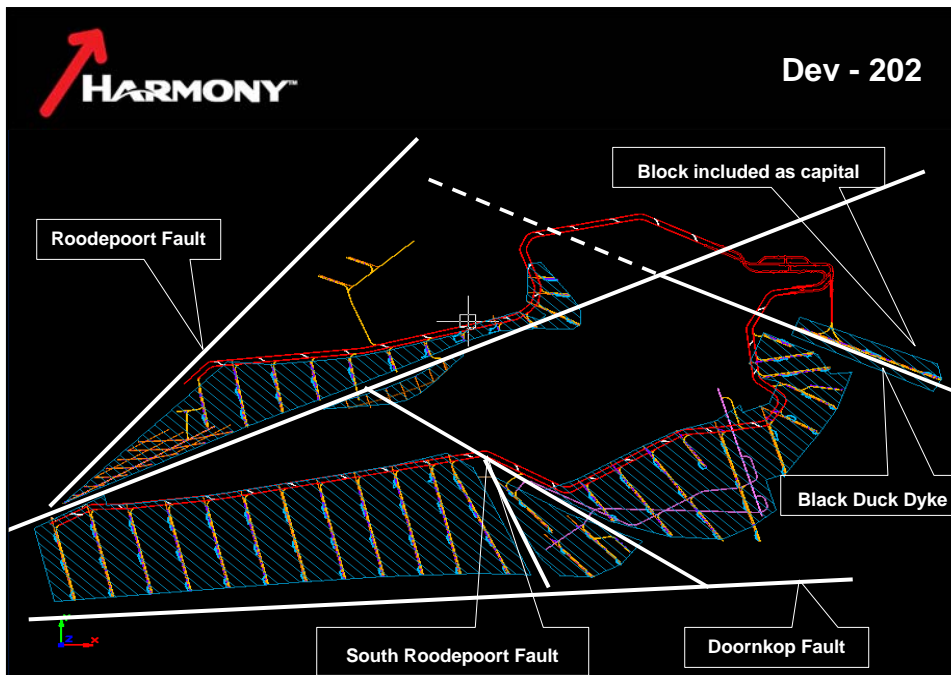
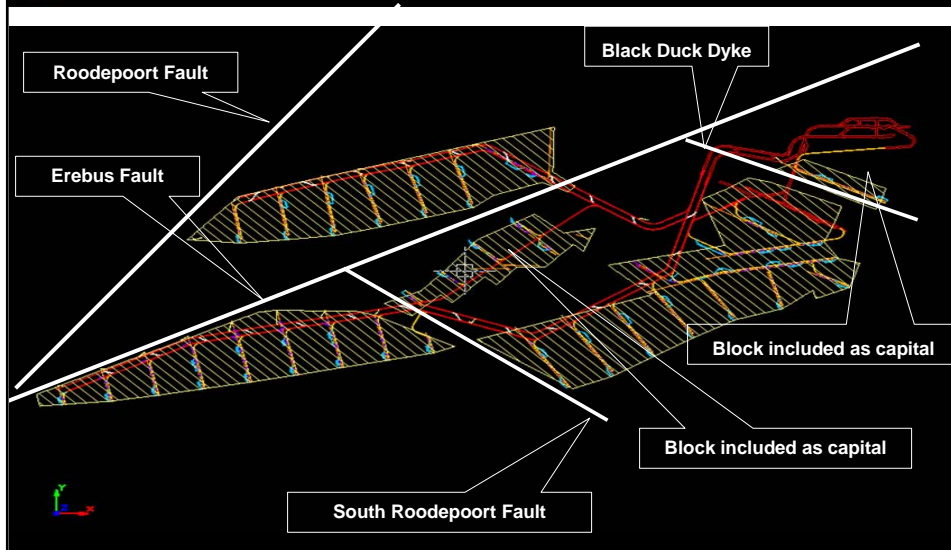




| GOLD | | | | | | | | | | | | | | | | |
|--------------------------|------------|-------------|----------------|----------------|------------|-------------|----------------|----------------|--------------|-------------|----------------|----------------|--------------|-------------|----------------|----------------|
| MINERAL RESOURCES | | | | | | | | | | | | | | | | |
| OPERATIONS | MEASURED | | | | INDICATED | | | | INFERRED | | | | TOTAL | | | |
| | Tons (Mt) | g/t | Gold ('000 kg) | Gold ('000 oz) | Tons (Mt) | g/t | Gold ('000 kg) | Gold ('000 oz) | Tons (Mt) | g/t | Gold ('000 kg) | Gold ('000 oz) | Tons (Mt) | g/t | Gold ('000 kg) | Gold ('000 oz) |
| Underground | | | | | | | | | | | | | | | | |
| Doornkop | | | | | | | | | | | | | | | | |
| Doornkop Kimberley Reef | 9.1 | 3.27 | 30 | 960 | 6.8 | 2.64 | 18 | 574 | 159.7 | 2.51 | 401 | 12,893 | 175.6 | 2.56 | 449 | 14,427 |
| Doornkop South Reef | 0.6 | 5.99 | 4 | 113 | 1.3 | 6.23 | 8 | 265 | 22.5 | 8.63 | 194 | 6,239 | 24.4 | 8.44 | 206 | 6,611 |
| Total | 9.7 | 3.42 | 33 | 1073 | 8.1 | 3.22 | 26 | 839 | 182.2 | 3.27 | 594 | 19,132 | 200.0 | 3.27 | 655 | 21,044 |
| MODIFYING FACTORS | | | | | | | | | | | | | | | | |
| OPERATIONS | MCF (%) | SW (cm) | MW (cm) | PRF (%) | | | | | | | | | | | | |
| Doornkop Kimberley Reef | 95 | 405 | 450 | 95 | | | | | | | | | | | | |
| Doornkop South Reef | 75 | 124 | 140 | 95 | | | | | | | | | | | | |
| ORE RESERVES | | | | | | | | | | | | | | | | |
| OPERATIONS | PROVEN | | | | PROBABLE | | | | TOTAL | | | | | | | |
| | Tons (Mt) | g/t | Gold ('000 kg) | Gold ('000 oz) | Tons (Mt) | g/t | Gold ('000 kg) | Gold ('000 oz) | Tons (Mt) | g/t | Gold ('000 kg) | Gold ('000 oz) | | | | |
| Underground | | | | | | | | | | | | | | | | |
| Doornkop | | | | | | | | | | | | | | | | |
| Doornkop Kimberley Reef | 0.3 | 2.48 | 1 | 20 | 0.3 | 2.57 | 1 | 25 | 0.6 | 2.53 | 1 | 45 | | | | |
| Doornkop South Reef | 0.4 | 4.30 | 2 | 50 | 0.9 | 4.27 | 4 | 128 | 1.3 | 4.28 | 6 | 178 | | | | |
| Total | 0.8 | 3.66 | 3 | 70 | 1.2 | 3.80 | 5 | 153 | 1.9 | 3.76 | 7 | 223 | | | | |

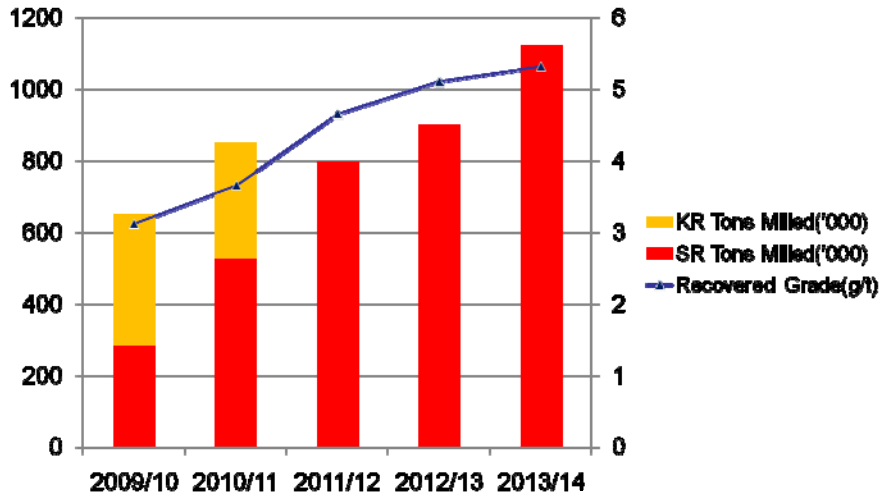
- Reflecting on 2008/9
 - Safety
 - Achieved excellent safety results
 - 16 months fatal free
 - Production
 - Infrastructure delays resulted in constraints for South Reef stoping and development
 - Rock Winder commissioning relieved hoisting constraints
 - Reef and waste orepass system in place on the South Reef
 - South Reef development improved by 24% and stoping by 33% in Q4
 - South Reef grade in line with expectation
 - Kimberley reef continued in trackless sections on 106 and 76 levels
 - Project
 - Rock Winder commissioned up to 132level mid shaft loading
 - Pumping infrastructure nearing completion
 - Development improvement



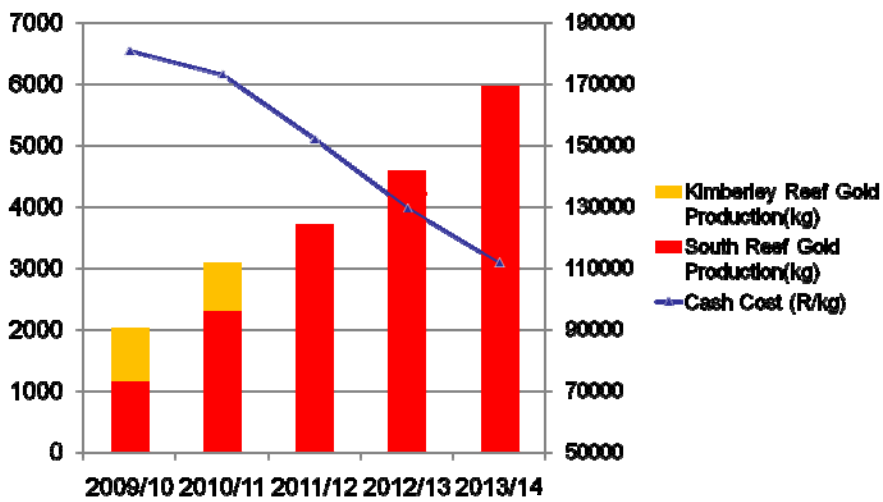




Doornkop 5 year Production Profile

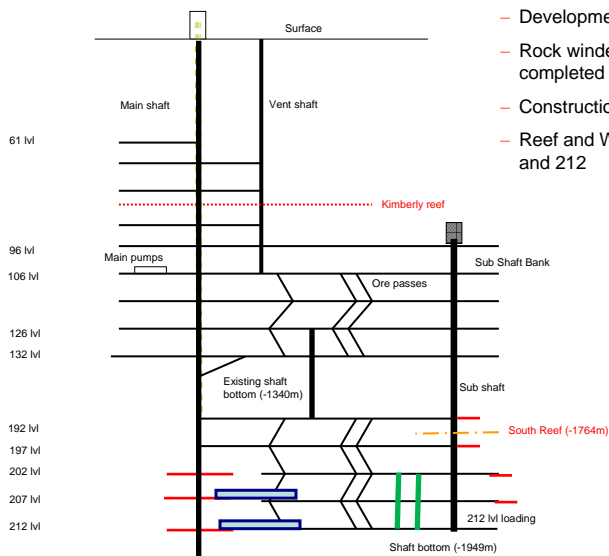


Doornkop 5 year Production Profile



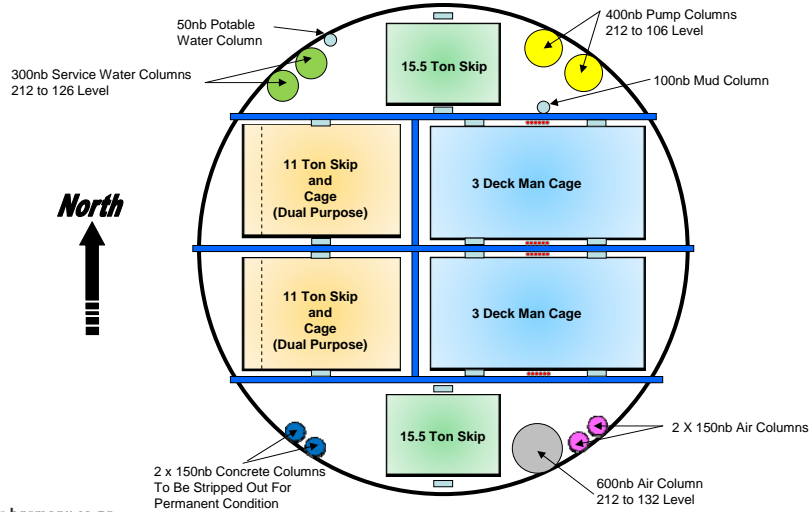
- Influences on the Production Profile:
 - Geological change on 192 level – Intersection of anticline
 - Higher structural risk of the block north of Erabus fault
 - Delay in hoisting and water handling capacity infrastructure
 - Supply of material to South reef
 - Underperformance of development on South Reef
 - Hoisting constraints
 - Ground Conditions of Black Duck dyke intersection

- Life of Mine = 15 years (2024)
- Peak Production (2014 – 2020)
 - 7 776 kg (average/year for total mine)
 - 250 000 oz (average/year for total mine)
 - 1,456 Mt/year (average/year for total mine) @ 5.34g/t
- 84 Tons Au will be mined over LOM
- Recovery Grade (average LOM) = 5.12g/t
- Cash Operating Cost (real terms):
 - R104 975/kg (average/year during peak production)
 - R560/t (average/year during peak production)
- Cost after capital (real terms):
 - R124 266/kg (average/year during peak production)
 - R662/t (average/year during peak production)
- Productivity (average/year during peak production):
 - 187g/TEC
 - 35 Tons/TEC

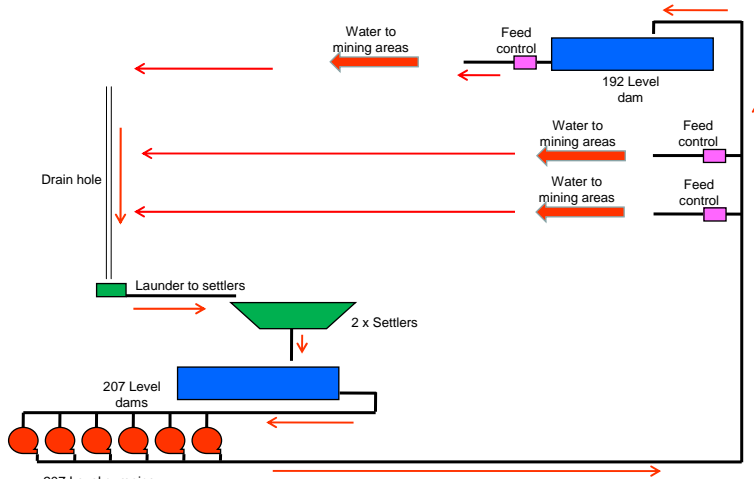


- Development continues
- Rock winder & loading on 132 level completed
- Construction of pumping infrastructure
- Reef and Waste silos between 207 and 212

Shaft Configuration



Water Reticulation



207 Level pumping
 6 x Circulating pumps
 2 x Dewatering pumps not shown
 2 x Mud pumps not shown



- Rock handling:
 - DP winder from 212 level 70 Kt/m
 - Rock winder from 132 level 100 Kt/m
- People and material:
 - 192 and 197 stations fully equipped and serviced by man winder.
- Water handling:
 - 45 Kt/m

- Rock handling:
 - DP winder from 132 & 212 level 40 Kt/m
 - Rock winder from 132 & 212 level 145 Kt/m
- People and material:
 - All stations fully equipped and serviced by man and DP winders
- Water handling:
 - 200 Kt/m or 400 lt/s continuous.
 - 600 lt/s peak

| | |
|---------------|--|
| August 2009 | Commissioning of the main pump station (phase 1) |
| October 2009 | Ore tracking system to be implemented |
| January 2010 | Installation of emergency generating capacity for the sub shaft winder |
| | Completion of 202 level station modifications |
| February 2010 | Equipping of Rock Winder compartment to shaft bottom (212 level) |
| | Murray & Roberts contract completion |

Annual Capital Expenditure Profile

| Capital Expenditure (Rm) | 2003 | 2004 | 2005 | 2006 | 2007 | 2008 | 2009 | 2010 | 2011 | 2012 | 2013 | Total |
|----------------------------|-----------|-----------|------------|------------|------------|------------|------------|------------|------------|-----------|-----------|--------------|
| Actual Sunk end March 2009 | 13 | 98 | 114 | 147 | 256 | 328 | 226 | | | | | 1,182 |
| Strategic Plan | | | | | | | | 209 | 122 | 99 | 67 | 498 |
| Forecast | | | | | | | 60 | | | | | 60 |
| Total | 13 | 98 | 114 | 147 | 256 | 328 | 286 | 209 | 122 | 99 | 67 | 1,740 |
| Cumulative | 13 | 111 | 226 | 372 | 628 | 956 | 1,242 | 1,452 | 1,574 | 1,673 | 1,740 | |