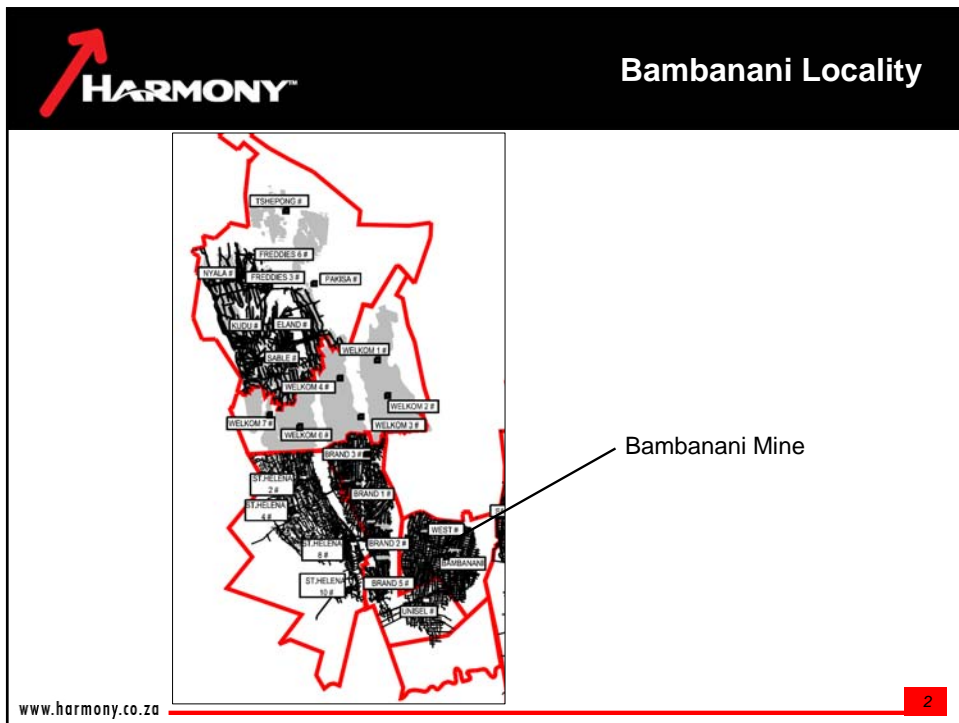
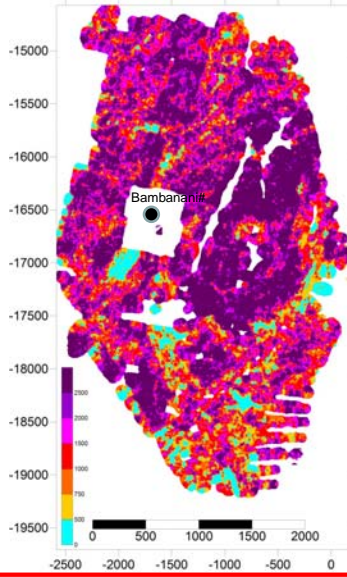


BAMBANANI

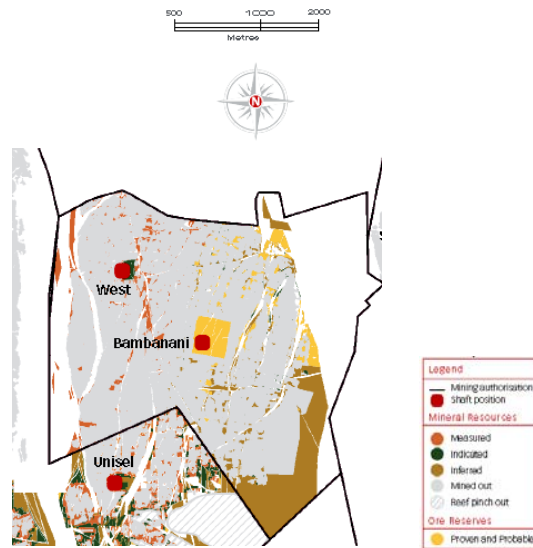


Bambanani Basal Reef grade contours (cmg/t)



Bambanani Development





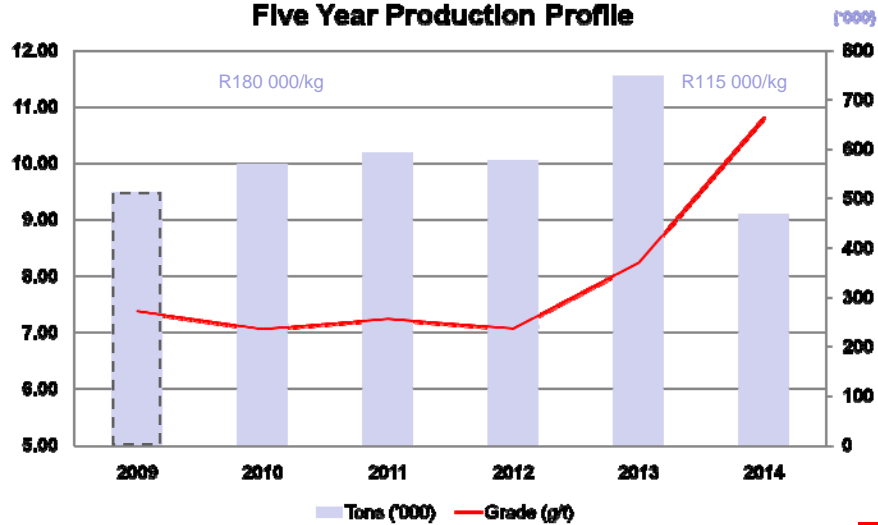
GOLD		MINERAL RESOURCES															
		MEASURED				INDICATED				INFERRED				TOTAL			
OPERATIONS		Tons (Mt)	g/t	Gold ('000 kg)	Gold ('000 oz)	Tons (Mt)	g/t	Gold ('000 kg)	Gold ('000 oz)	Tons (Mt)	g/t	Gold ('000 kg)	Gold ('000 oz)	Tons (Mt)	g/t	Gold ('000 kg)	Gold ('000 oz)
Underground																	
Bambanani		11.4	11.20	127	4,087	6.4	9.67	62	1,993	3.8	9.02	34	1,401	21.6	10.38	223	7,181

MODIFYING FACTORS				
OPERATIONS	MCF (%)	SW (cm)	MW (cm)	PRF (%)
Bambanani	78	200	218	96

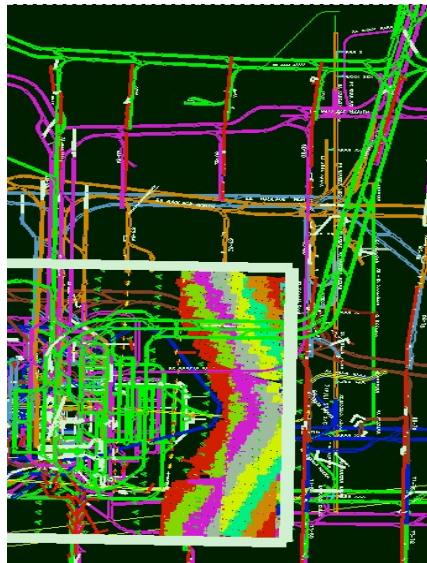
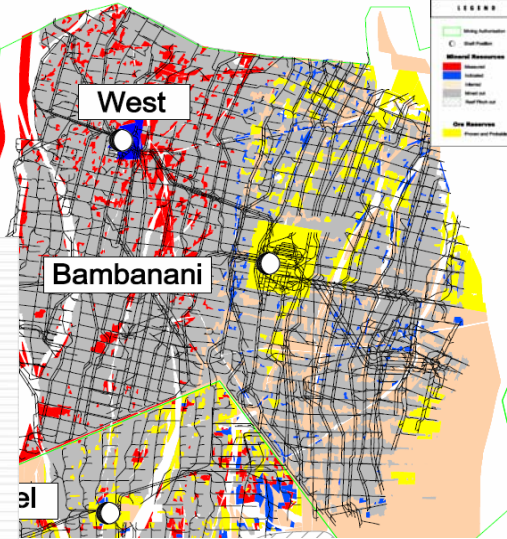
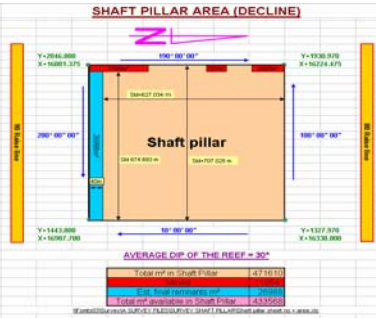
GOLD		ORE RESERVES											
		PROVEN				PROBABLE				TOTAL			
OPERATIONS		Tons (Mt)	g/t	Gold ('000 kg)	Gold ('000 oz)	Tons (Mt)	g/t	Gold ('000 kg)	Gold ('000 oz)	Tons (Mt)	g/t	Gold ('000 kg)	Gold ('000 oz)
Underground													
Bambanani		3.5	8.48	30	965	1.2	10.90	13	420	4.7	9.09	43	1,385

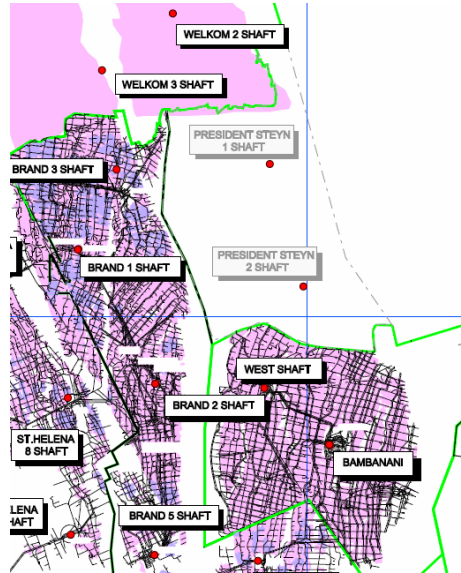
- FY09
 - LTIFR improve 33% to 7.48, RIFR improve 31% to 5.09
 - Behavior Improvement Intervention for further safety improvements
 - Tons on target
 - Fires affected high grade areas from second quarter
 - R184 106/kg cash costs affected by lower grades
- Production profile kept despite IR events
- Split reef/waste hoisting
- Systematic re-opening affected areas (2 of 4)
- Shaft Pillar Project development commenced

Five Year Production Profile



Total Final est. cost R 309 m
 Act Sunk Mar09 R Nil m
 Remaining capital R 309 m
 NPV Rm (R225/g) 1 350
 IRR @ 7.5% 53%
 Full production (tons) Jun 2013





Thank you